
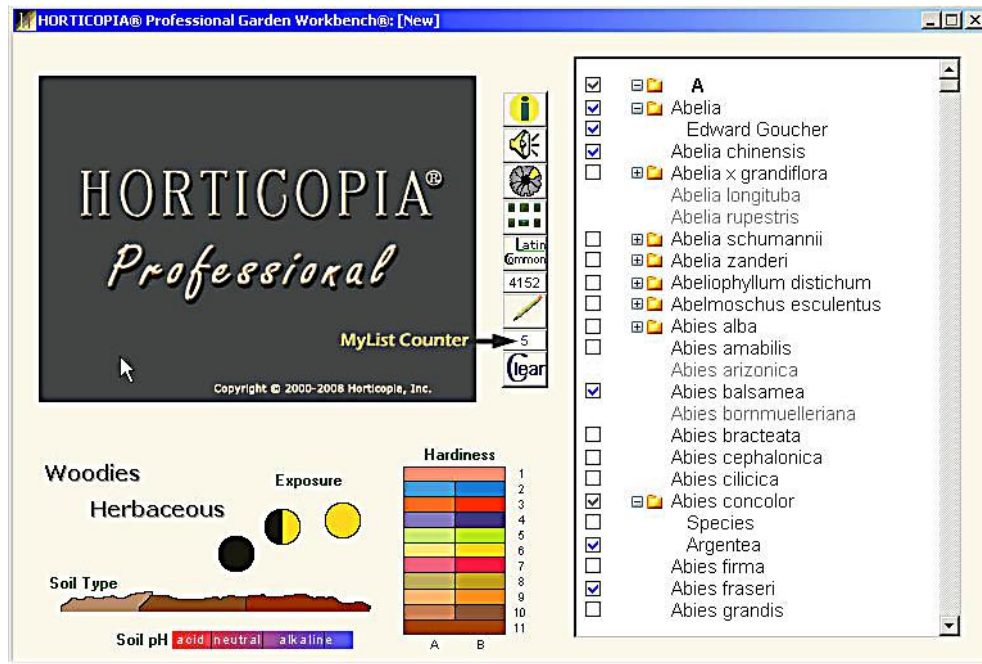



# MyList®

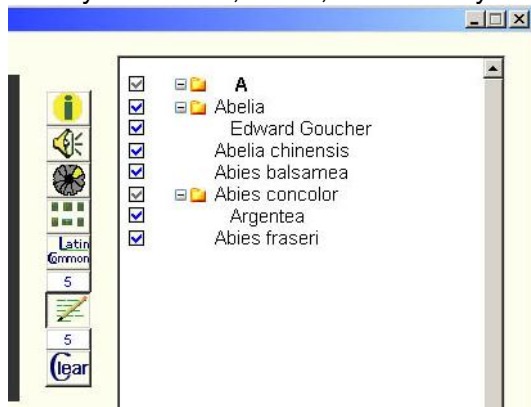
## Creating a new MyList with the plants of your choice

1. **To add a plant** to your MyList, click on an empty box next to a plant or cultivar. If there is a folder next to the plant name, open the folder first.
2. **To remove a plant** from your MyList, click the box with a check next to the plant name.

Also, notice that the MyList counter under the MyList button  changes as you add/remove plants on your MyList.



After you have added several plants to your MyList by clicking on the boxes, you can click on the MyList button, , to view only the selections you have made.



# MyList®

## Adding/Deleting plants to an existing MyList

After opening a MyList, click on the MyList button  to see the entire plant list. You can then add or remove plants as described above and save your modified MyList.

## Saving a MyList

After adding the plants you want, you can save the MyList by clicking from the **File** menu, select **Save MyList as**. Choose a name and location for your list and click **Save**.

## Retrieving a MyList

To retrieve a previously saved MyList, from the menu bar click on **File** select **Open MyList** and browse to your MyList.

## Merging MyLists

Open a MyList to which you want to add additional plants, then click on **File/Merge into MyList**. Select the MyList containing the plants you want to add, click **Open**. Click the MyList button twice to set all plants on your merged MyList.

## Finding Plants Common between Two MyLists

Add one of the MyLists to Favorites.

- Open the first MyList (such as a drought tolerant list).
- From the menu bar, click on **Favorites**, then from the drop down menu, click on **Add MyList**. Name the list and save. Click **File**, then **Close MyList**.

Open your second MyList (such as easy to grow plants).

From the menu bar, click on **Favorites**, then select the favorites file created above.

Remaining plants listed will be common to both lists.